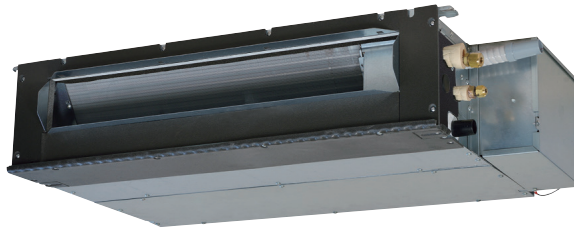




SINGLE-SPLIT CEILING CONCEALED TYPE

SRR-ZS

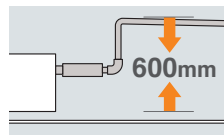
NEW



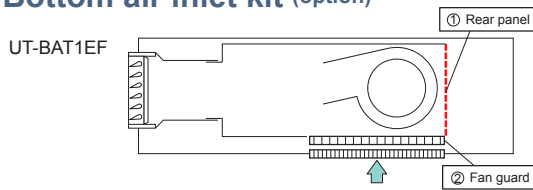
SRR25ZS-W, SRR35ZS-W

Single Multi

Enhanced Installation Workability
600mm Drain Pump is mounted in all models. The indoor unit is completely hidden in the ceiling, so this is suitable for spaces with classy interior decoration.



Bottom air inlet kit (option)



KEY FEATURES

- The SRR series' indoor unit is concealed under the ceiling and is perfect for a living room or bedroom area.
- Thin design, the height of SRR models is only 200mm.
- Low Global Warming Potential (GWP) and High energy efficiency by new refrigerant R32.
- Quiet Operation
- Low Static Pressure Level (35Pa)

SPECIFICATIONS

Indoor unit			SRR25ZS-W	SRR35ZS-W
Outdoor unit			SRC25ZS-W2	SRC35ZS-W2
Power source			1 Phase, 220 - 240V, 50Hz	
Nominal cooling capacity (Min~Max)		kW	2.5 (0.9 ~ 3.2)	3.5 (0.9 ~ 4.1)
Nominal heating capacity (Min~Max)		kW	2.9 (0.9 ~ 4.4)	4.2 (1.0 ~ 5.2)
Power consumption	Cooling/Heating	kW	0.62 / 0.65	0.93 / 1.01
	Cooling/Heating		4.03 / 4.46	3.76 / 4.16
EER/COP				
Max. running current		A	9	
Sound power level	Indoor	Cooling/Heating	56 / 59	
	Outdoor	Cooling/Heating	58 / 58	
Sound pressure level	Indoor	Cooling (Hi/Me/Lo/Ulo)	37 / 33 / 30 / 24	
		Heating (Hi/Me/Lo/Ulo)	40 / 37 / 34 / 28	
	Outdoor	Cooling/Heating	47 / 47	
		Cooling (Hi/Me/Lo/Ulo)	9.5 / 8.0 / 6.5 / 4.5	
Air flow	Indoor	Heating (Hi/Me/Lo/Ulo)	10.0 / 8.5 / 7.0 / 5.0	
		Cooling/Heating	10.0 / 9.0 / 8.0 / 6.0	
	Outdoor	Cooling/Heating	10.5 / 9.5 / 8.5 / 6.5	
Available external static pressure		Pa	35 (Initial static pressure with air filter : 5Pa)	
Exterior dimensions	Indoor	HeightxWidthxDepth	200 x 750 x 500	
	Outdoor		540 x 780(+62) x 290	
Net weight		Indoor / Outdoor	20.5 / 31.0	
Refrigerant		Type/GWP	R32 / 675	
		Charge	kg/TCO ₂ Eq 0.62 / 0.419	
Refrigerant piping size		Liquid/Gas	ø mm 6.35(1/4") / 9.52(3/8")	
Refrigerant line (one way) length[chargeless length]			m Max. 20 [15]	
Vertical height differences		Outdoor is higher/lower	m Max. 10 / Max.10	
Outdoor operating temperature range		Cooling	°C -15~46	
		Heating	-15~24	
Bottom air inlet kit (option)			UT-BAT1EF	

* The data are measured under the following conditions(ISO-T1, H1). Cooling: Indoor temp. of 27°CDB, 19°CWB, and outdoor temp. of 35°CDB. Heating: Indoor temp. of 20°CDB, and outdoor temp. of 7°CDB, 6°CWB.
 * Sound level indicates the value in an anechoic chamber. During operation these values are somewhat higher due to ambient conditions.
 * 'tonne(s) of CO₂ equivalent' means a quantity of greenhouse gases- expressed as the product of the weight of the greenhouse gases in metric tonnes and of their global warming potential.